

CC1 Docking Station introduction (optional, also known as the Workstation)

1. Safety Instructions

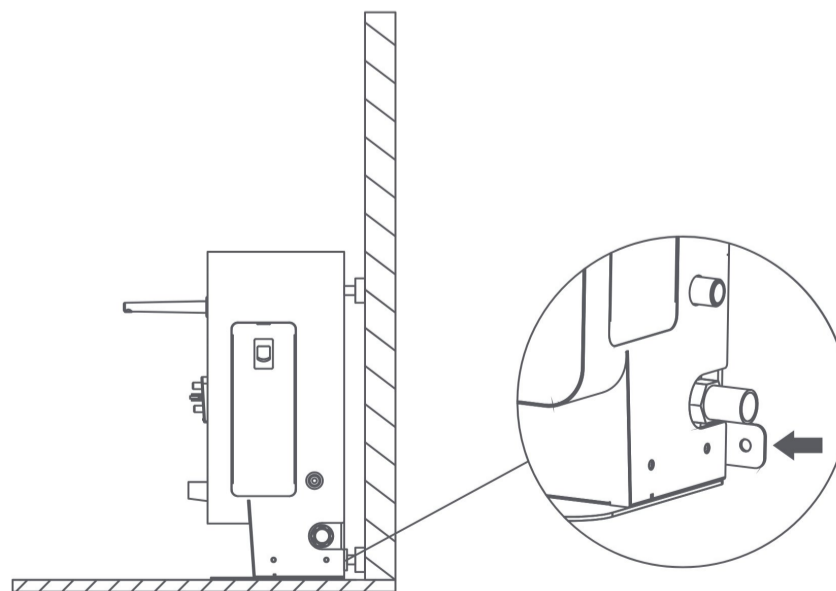
1.1 Instructions for use

- Docking station users should receive professional training from technical support personnel.
- Deployment of docking station may involve lightweight construction of waterways or circuits, so professionals are required to implement.
- The docking station should be placed in an indoor scene with normal temperature. It is forbidden to place the docking station in a high temperature area ($> 40^{\circ}\text{C}$) for use.
- If the docking station is damaged, the charging current is abnormal, or the charging/draining is abnormal, please stop using the docking station.
- Be sure to use the original power cord, and it is strictly forbidden to use non-original power cords to supply power to the docking station.
- Carefully protect the power cord to avoid pulling and twisting.
- It is strictly forbidden for the docking station to collide with foreign objects, causing damage to the docking station.
- Do not use the docking station near flammable and explosive objects.
- If the docking station emits smoke or burnt smell, it means that the docking station is abnormal.
- Please disconnect the power supply of the docking station immediately and contact Purdue staff.
- Do not move the docking station arbitrarily when in use, and use the docking station at the designated location.
- It is strictly forbidden to store or work in areas exposed to direct sunlight.
- If there is an abnormal red light on the docking station, please separate the robot from the docking station, wait for the docking station light to turn green before it can be used again.
- If the red light does not go off for a long time, please contact technical support personnel.
- If you need to use the function of automatically adding cleaning solution, please use non-foaming cleaning agent, Prohibit the use of strong corrosive cleaning agents such as strong acid and strong alkali. Be sure to tighten the water pipe joint.
- This appliance can be used by children aged from 8 years and above and persons with reduced physical, sensory or mental capabilities or lack of experience and knowledge if they have been given supervision or instruction concerning use of the appliance in a safe way and understand the hazards involved. Children shall not play with the appliance. Cleaning and user maintenance shall not be made by children without supervision.
- Children should be supervised to ensure that they do not play with the appliance.
- Warning against recharging non-rechargeable batteries.
- Before using battery charger, read all instructions and cautionary markings on battery charger, battery, and product using battery.
- For indoor use, or do not expose to rain.
- Use only with battery charger for model AP-PF600CH02920150B.
- Use only with commercial cleaning robot for model CCBC01.

1.2 Environmental Notice

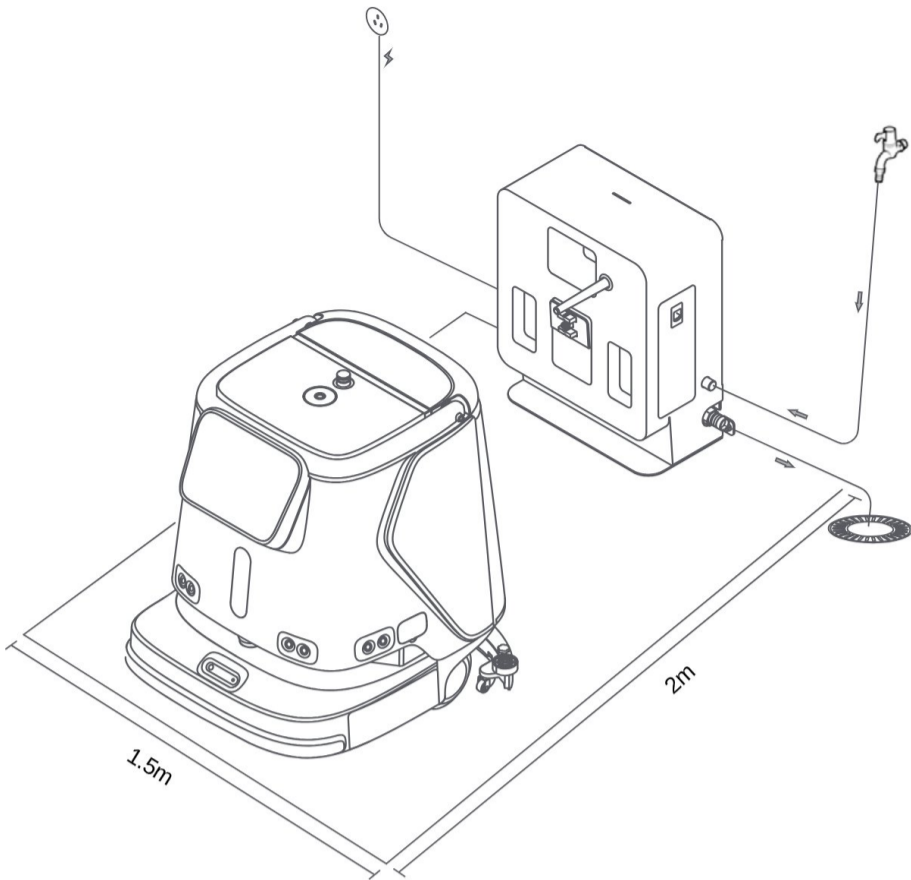
- Working environment temperature: 0°C - 40°C , relative humidity: $\leq 90\%$ ($< 40^{\circ}\text{C}$).
- Storage ambient temperature: -20°C - 70°C , relative humidity $\leq 85\%$, storage for 1 year.
- Working environment requirements:

1. The docking station needs to be placed on a flat ground for use, with its back against a flat wall, and fixed to the wall or the ground



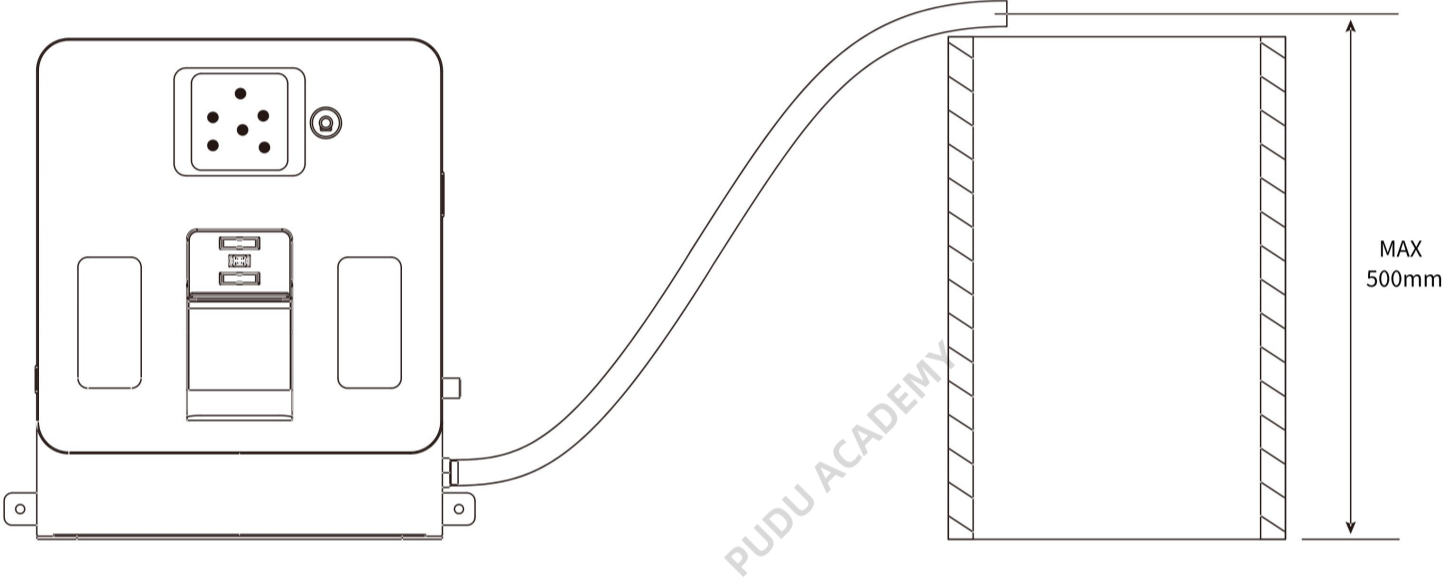
through lateral connection components.

2. There are no reflective or light-transmitting parts such as mirrors or glass in the working position of the docking station. If it is unavoidable, the environment may need to be modified to a certain extent.
3. There should be no flammable objects around the docking station.
4. During normal operation, keep open and unobstructed within 2 meters in front and 1.5 meters in the left and right directions.



5. The pressure of clean water is 0.1-0.6 mpa.

6. The height of the sewage outlet is not more than 0.5 m from the ground.

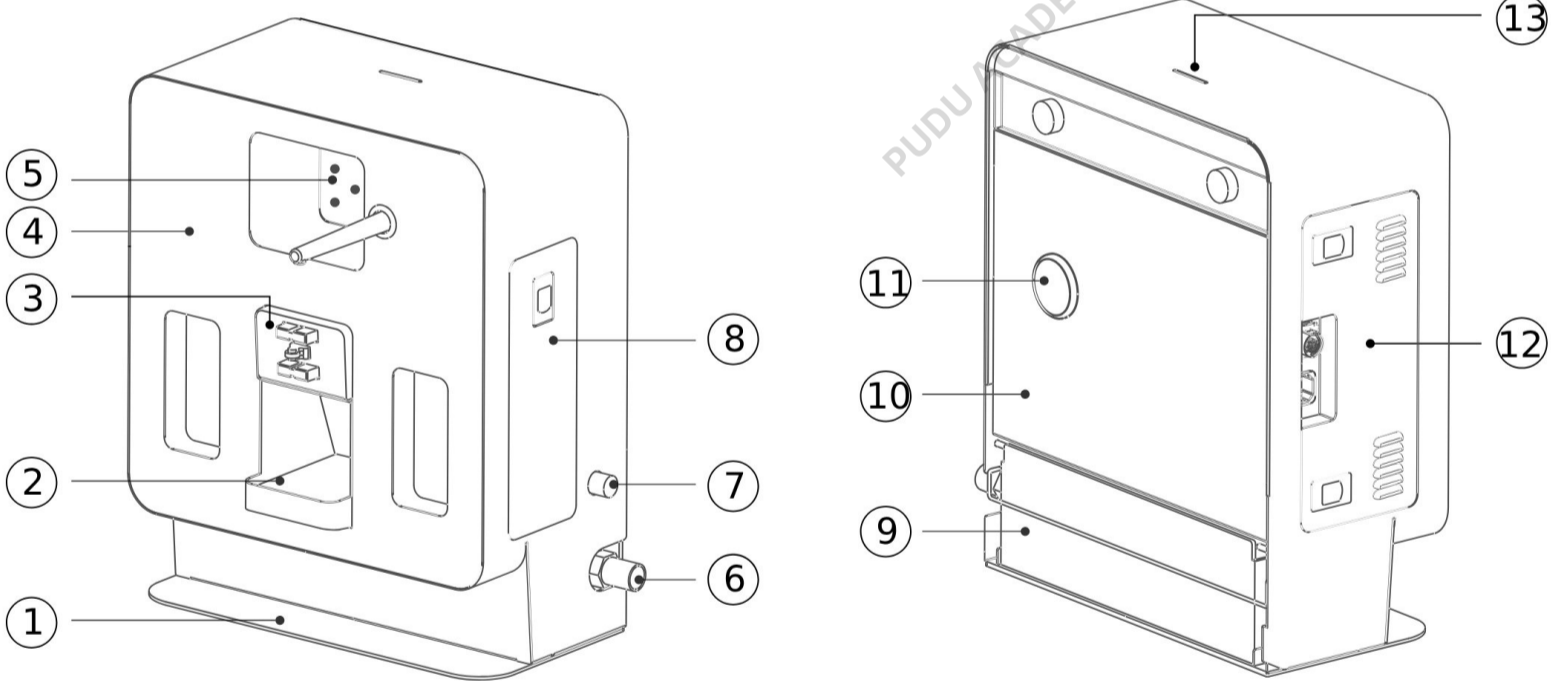


2. Product introduction

2.1 Packing list

machine × 1, instruction manual × 1, clean water pipe × 1, sewage pipe × 1.

2.2 Appearance introduction



No.	Description	No.	Description	No.	Description
1	Bottom plate	6	Sewage pipe	11	Pressure valve cover
2	Sink	7	Inlet pipe	12	Power adapter compartment side cover
3	Electrode holder	8	Detergent cover	13	Status light
4	Front shell	9	Sewage transfer box		
5	QR code board	10	Rear cover		

2.3 Performance parameters

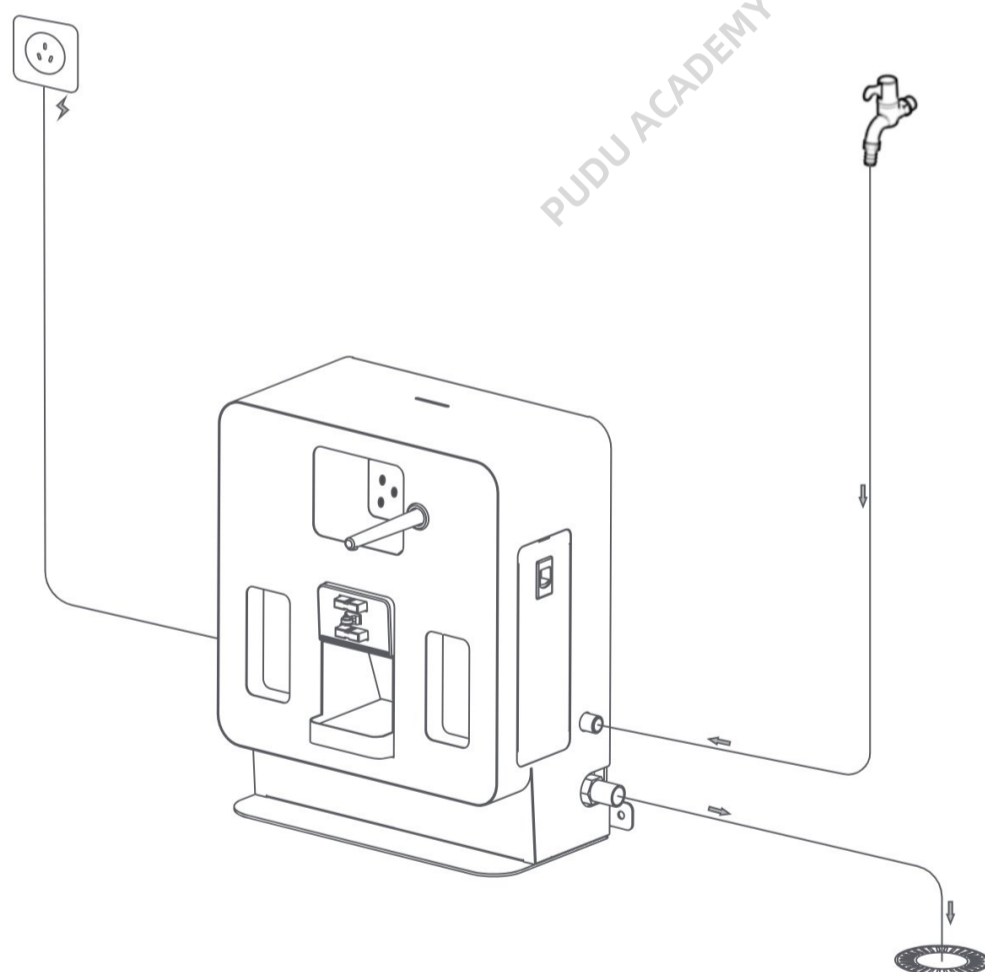
Product Characteristics	Description
Product Name	CC1 Docking Station
Product function	Support robot automatic adding and draining, automatic charging, automatic injection of cleaning agent

Dimensions (L x W x H)	40.4*27.4*49.7 cm (15.90*10.79*19.57 inches)
Body weight	20 kg (44.09 pounds)
Input voltage	AC 100-240 V
Output voltage	DC 29.2 V
Working temperature	0°C to 40°C (32°F to 104°F)
Working humidity	RH: ≤ 90% (40°C) / RH: ≤ 90% (104°F)
Storage temperature	-20°C to 70 °C (-4°F to 158°F)
Transmit frequency	2400-2483.5 MHz
Transmit power	≤ 10 dBm
Communication method	Bluetooth
Installation requirements	Ground fixed or back against the wall fixed
External dependencies	External dependencies Water source, floor drain, power supply

3. Product use

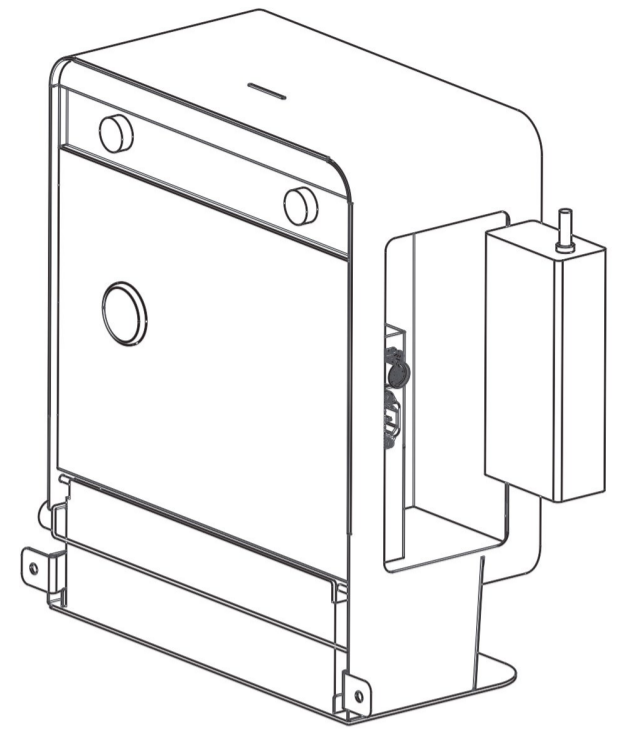
3.1 Instructions for use

- Connect one end of the water inlet pipe to the water inlet of the docking station, and the other end to the clean water source; Connect one end of the sewage pipe to the drainage outlet of the docking station, and place the other end at the sewage discharge place.

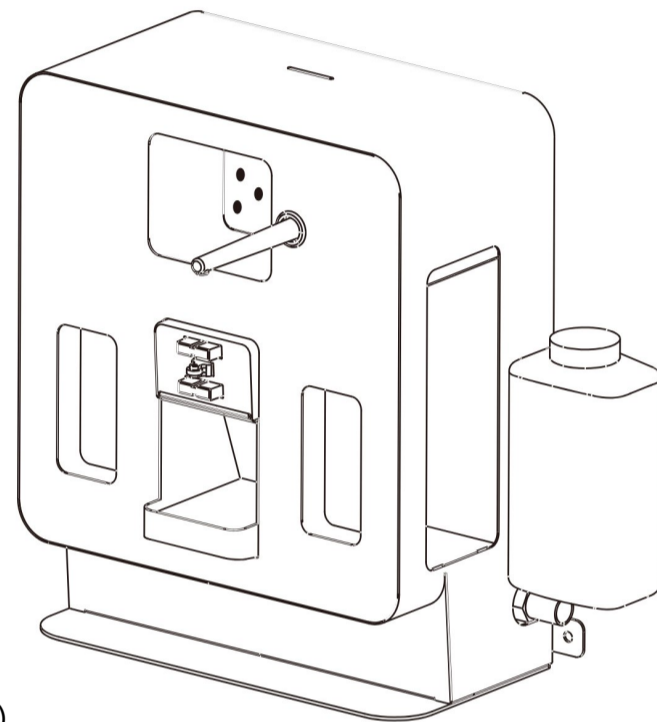


(as shown below)

- Install the battery charger of the CC1 robot into the docking station internal (as shown in the figure below), and please use the power cord of the CC1 battery charger for the external power connection of the docking station.



- * When installing, pay attention to the heat dissipation hole of the power adapter facing down.
- If you need to add cleaning solution, please take out the cleaning solution container, pour the

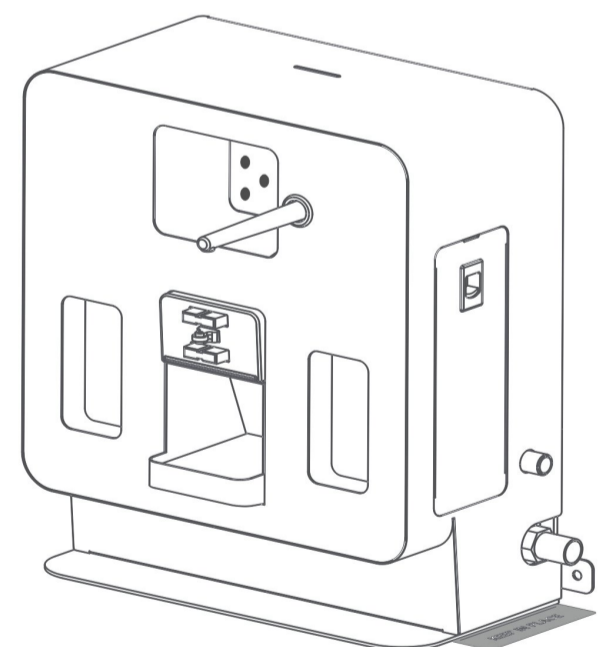
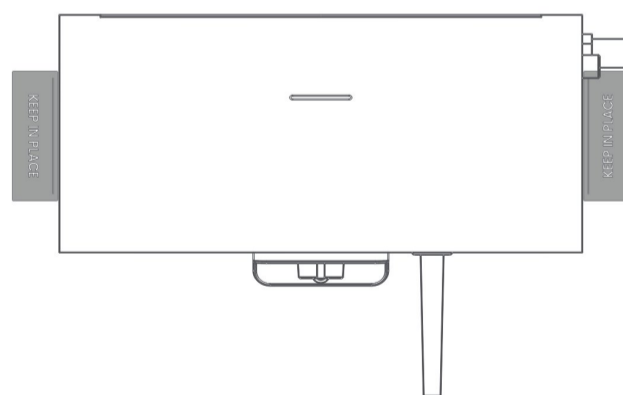


cleaning solution and put it back into the docking station .(as shown below)

Attention: This docking station only supports the use of non-foaming cleaners, and strong acid and strong alkaline cleaners are prohibited.

When the equipment is transferred, please empty the cleaning agent in the container.

- You can use identification stickers to mark the positions on both sides of the docking station (as



shown in the figure below).

3.2 Indicator light description

Indicator Light	Description Light Status
Flashing red	Fault occurred
Steady green	Formal standby (not connected)
Flashing green	Connecting with the robot
Breath green	Successfully connected

3.3. Maintenance

- The docking station is dirty and dusty, please use a soft, clean, lint-free cloth to wipe it clean.
- Regularly clean the dirt in the dirt tray of the docking station.
- In case of cracks, deformation, water leakage, inability to add drainage, inability to charge the docking station, etc., please disconnect the power supply and contact the after-sales service in time.

4. After sales service

4.1 Free warranty service

- The company promises to meet the following conditions, from the date of product receipt, within the effective warranty period of the product (the warranty period of different parts of the product is different), Free product warranty service will be provided if the following conditions are met:
 - Since the purchased product is used normally within the specified product warranty period, there are non-artificial quality problems;
 - No unauthorized disassembly, no modification or installation not guided by the official manual, and other non-human failures;
 - The product serial number, factory label and other marks are not torn or altered;
 - Provide valid proof of purchase, receipt and order number;
 - Damaged spare parts replaced during the free warranty period belong to the company and should be sent back as required by the company.

4.2 After-sales service beyond the scope of warranty

- For after-sales service that is not within the scope of free warranty (beyond the warranty period or does not meet the terms of free warranty within the warranty period), the company provides paid after-sales service;
- If it is necessary to come to the door to solve the problem after the diagnosis of the technical engineer, assign a professional technician to provide the door-to-door service;
- For after-sales service that is not within the scope of free warranty, you need to fill in the "After-sales Service Record Form" as required;
- Service fee includes: after-sales maintenance fee and spare parts fee.

4.3 After-sales service consultation

If you have any questions, please contact Purdue Technology customer service hotline: +86 755-86952935.
Email: techservice@pudutech.com

5. Compliance information

5.1 Disposal and recycling information



The Waste Electrical and Electronic Equipment (WEEE) Directive aims to minimize the impact of electrical and electronic goods on the environment, by increasing re-use and recycling and by reducing the amount of WEEE going to landfill. The symbol on this product or its packaging signifies that this product must be disposed separately from ordinary household wastes at its end of life. Be aware that this is your responsibility to dispose of electronic equipment at recycling centers in order to conserve natural resources. Each country should have its collection centers for electrical and electronic equipment recycling. For information about your recycling drop off area, please contact your related electrical and electronic equipment waste management authority, your local city office, or your house hold waste disposal service.

5.2 Federal Communications Commission compliance statement

The following information applies to Pudu robotic.

This equipment has been tested and found to comply with the limits for a Class B digital device, pursuant to part 15 of the FCC Rules. These limits are designed to provide reasonable protection against harmful interference in a residential installation.

This equipment generates, uses and can radiate radio frequency energy and, if not installed and used in accordance with the instructions, may cause harmful interference to radio communications. However, there is no guarantee that interference will not occur in a particular installation. If this equipment does cause harmful interference to radio or television reception, which can be

determined by turning the equipment off and on, the user is encouraged to try to correct the interference by one or more of the following measures:

- Reorient or relocate the receiving antenna.
- Increase the separation between the equipment and receiver.
- Connect the equipment into an outlet on a circuit different from that to which the receiver is connected.
- Consult the dealer or an experienced radio/TV technician for help.

This device complies with Part 15 of the FCC rules. Operation is subject to the following two conditions:

- This device may not cause harmful interference.
- This device must accept any interference received, including interference that may cause undesired operation.

5.3 Industry Canada compliance statement

This device complies with Industry Canada licence-exempt RSS standard(s). Operation is subject to the following two conditions:

- This device may not cause interference.
- This device must accept any interference, including interference that may cause undesired operation of the device.

L'émetteur/récepteur exempt de licence contenu dans le présent appareil est conforme aux CNR d'Innovation, Sciences et Développement économique Canada applicables aux appareils radio exempts de licence. L'exploitation est autorisée aux deux conditions suivantes :

- L'appareil ne doit pas produire de brouillage;
- L'appareil doit accepter tout brouillage radioélectrique subi, même si le brouillage est susceptible d'en compromettre le fonctionnement.